

Pythium Blight



Introduction:

Pythium Blight occurs when day and night temperatures exceed 30°C and 20°C, respectively, and when the relative humidity is high.

Methodology:

- ▶ High soil salinity = Increased susceptibility
- ▶ High fertility generally = Increased disease
- ▶ Low soil moisture preceding significant rainfall and high temps

*Trial Products Used

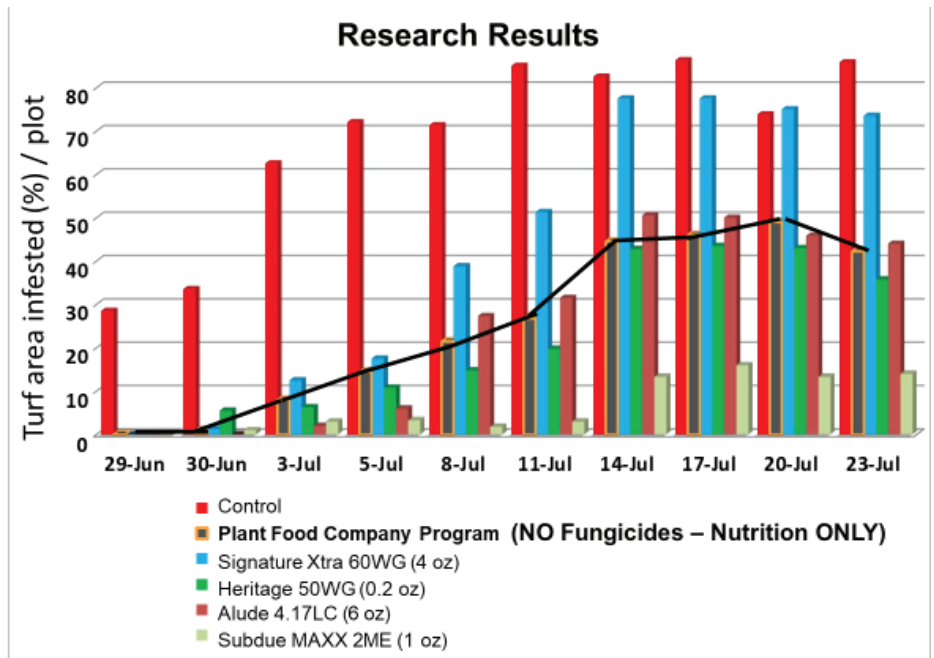
Plant Food Program

- 10 L/HA PolyPhosphite 30
- 10 L/HA FloThru A-Plus
- 0.6 L/HA Green Blade

Rutgers University Research | 2019

Bruce Clarke, PhD

Reference Material: [Reference the documented university research result here.](#)



www.plantfoodco.com | 800-562-1291

Follow Us @PlantFoodCo  

Local Product Supplier

TurfCare

IRL +353 (0)45 856026 | UK +44 1425 472102

info@turfcare.eu | www.turfcare.eu

Follow Us @TurfCare_IRL_UK 



These nutrient rich products have been formulated and paired together for applications based on agronomic science with the intent of correcting critical nutrient deficiencies and environmental conditions so to increase the immunity and health of the turf plant without the need of chemical inputs. These are not pesticides or fungicides and make no claim to cure or prevent a pathogen or pest.